

Push Trolley POWERTEX PPT-S1

Product information



POWERTEX

POWERTEX push trolley operated by pushing. A compact and low buildt design with low dead weight in a solid steel construction. It includes mechanical stops to ensure that the trolley is kept on the beam in case of an accident (anti-drop + anti-tilt). Fits most types of beam profiles and most brands of lifting blocks and electric hoists. Wheels with ball bearings.

Supplied with grey label for adhering over white nameplate for use in the entertainment industry.

Static test coefficient: WLL x 1,5.

[... Read more](#)

Marking: According to standard, WLL, CE and individual serial number.

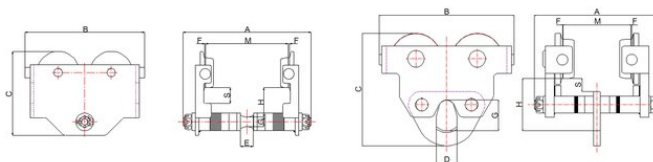
Finish: Black painted.

Standard: EN 13157

Safety factor: 4:1

Push Trolley POWERTEX PPT-S1

Blueprint



Technical data

Part code	WLL ton	Beam width mm	Wheel Ø outside/inside mm	Minimum radius mm	Weight kg
502500302050050	3	100-205	131,3/100	1,300	30