

## Attachment-point Ring Point RP

### Product information



The JDT RP attachment-point ring point is a forged lifting point designed for load attachment in industrial lifting and handling applications. It provides a rotating and adjustable lifting connection that supports easier sling alignment while reducing the risk of unintended loosening during use. Suitable for fixed lifting points on machinery, components, and fabricated structures.

#### Best used for:

- Fixed lifting points requiring adjustable load direction
- Industrial lifting applications with chain or sling connections

#### Product benefits:

- 360° rotating body supports flexible load positioning
- 110° working range improves sling alignment flexibility
- Toolless assembly and disassembly simplify installation procedures
- Forged construction improves durability in industrial environments
- DGUV-tested and DEKRA type-approved for verified lifting compliance
- Powder-coated finish helps protect against surface wear
- 100% crack tested for improved inspection reliability

... [Read more](#)

**Material:** High-strength forged components

**Marking:** CE-marked, UKCA-marked

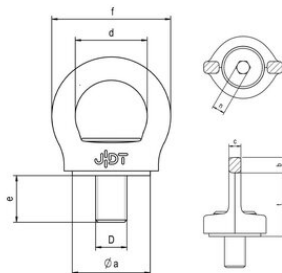
**Temperature range:** -40°C up to +300°C

**Finish:** Powder-coated, RAL 5021 waterblue

**Safety factor:** 4:1

## Attachment-point Ring Point RP

### Blueprint



### Technical data

Part code	Code	WLL ton	Thread mm	Pitch DIN 13	D mm	e mm	a mm	b mm	c mm	d mm	f mm	t mm	g mm	n mm	Weight kg
42150382100008	RP 0.35	1	M8	1.25	M8	18	30	10	5	25	45	37	21	6	0.12
42150382100001	RP 0.5	1.5	M 10	1.5	M 10	18	30	10	5	25	45	37	21	6	0.13
42150382100000	RP 0.7	2.5	M 12	1.8	M 12	18	36,5	13	7	34	60	49	30	8	0.3
42150382101000	RP 1.5	4	M 16	2	M 16	20	42	14	10	36	64	51	32	10	0.4
42150382102000	RP 2.3	5.5	M 20	2.5	M 20	30	50	15	12	46	76	61	37	12	0.7
42150382103000	RP 3.2	8	M 24	3	M 24	30	64	19	15	52	90	74	47	14	1.2
42150382104000	RP 4.5	12	M 30	3.5	M 30	35	75	25	19	62	112	91	56	17	2.2