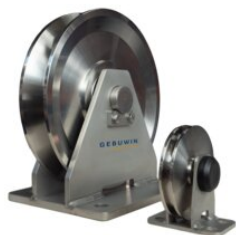


## Pulley Block Stainless Steel KB150-6500

---

### Product information



The stainless steel pulley blocks from Gebuwin's product range are suitable for both hand and electric winches. The wheel and frame is made of stainless steel 316 and fitted with bearings. The pulley blocks are used to guide the cable to the location where the load has to be moved. A fine way to make moving your load easier.

- suitable for electric and manual winches
- pulley wheel: stainless steel AISI 316 except 150 kg and 300 kg models: AISI 304
- bracket: stainless steel AISI 316 except 150 kg and 300 kg models: AISI 304
- plain bearing

#### Options:

- ATEX suitable

... [Read more](#)

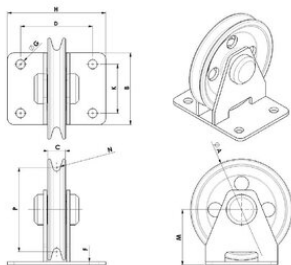
---

**Material:** Stainless steel - Capacities 150 and 300 kg AISI 304 all other models AISI 316

**Marking:** CE-marked, UKCA-marked

## Pulley Block Stainless Steel KB150-6500

### Blueprint



### Technical data

Part code	Rope Ø range	WLL ton	Model	Material	A mm	B mm	C mm	D mm	F mm	G mm	H mm	K mm	M mm	N mm	P mm	Weight kg
140100800510	8	0.15	KB150 SST	AISI 304	75	60	18	65	5	11	90	35	48	4.2	67	1
140100900510	9	0.3	KB300 SST	AISI 304	100	65	21	70	5	11	100	35	60	4.8	90	1.36
140101000510	6	0.5	KB500 SST	AISI 316	85	60	21	65	5	11	90	35	53	3.2	66	1
140101000511	9	1	KB1000 SST	AISI 316	125	110	30	80	6	14	120	75	71	4.8	139	3
140101600510	14	2	KB2000 SST	AISI 316	180	165	38	105	8	17	155	115	103	7	149	6.5
140101800510	18	4	KB4000 SST	AISI 316	240	200	50	140	10	21	195	145	135	9.5	204	11.5
140102600510	24	6.5	KB6500 SST	AISI 316	300	240	60	155	12	21	215	180	167	12.5	255	21