

## Closed Spelter Socket CSS

---

### Product information



The Ropeblock closed spelter socket CSS designed with mechanical values (Charpy-V > 42 joule / - 20° C) for tough and low temperature use. All sockets have a 100% efficiency on the MBL of the steel wire rope but are limited to the MBL of the socket.

The CSS sockets are Type Approved by DNV and Lloyd's Register.

CSS 296 until CSS 201 only available with hot dipped galvanized finish [... Read more](#)

---

**Material:** Quenched and tempered cast steel.

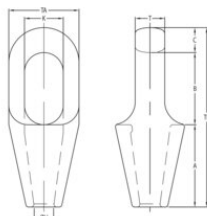
**Marking:** CE-marked

**Temperature range:** - 40°C to + 110°C - Use at higher temperatures possible with reduction of WLL.

**Finish:** Hot dipped Galvanized (G) or painted blue (P).

## Closed Spelter Socket CSS

### Blueprint



### Technical data

Part code	Rope Ø range mm	MBL ton	Finish	Strand Ø mm	A mm	B mm	C mm	Ø H mm mm	K mm	T mm	TA mm mm	TL mm mm	Weight kg
122100700185	6-7	8	Painted	-	50	40	11	9,1	22	13	37	101	0.3
122100700182	6-7	8	Galvanized	-	50	40	11	9,1	22	13	37	101	0.3
122101000185	8-10	12	Painted	-	57	48	14	12,6	25	18	43	119	0.5
122101000182	8-10	12	Galvanized	-	57	48	14	12,6	25	18	43	119	0.5
122101300185	11-13	20	Painted	-	64	59	17,5	14,6	30	23	51	140	0.7
122101300182	11-13	20	Galvanized	-	64	59	17,5	14,6	30	23	51	140	0.7
122101600185	14-16	25	Painted	13	76	65	21	18,1	36	26	67	162	1.4
122101600182	14-16	25	Galvanized	13	76	65	21	18,1	36	26	67	162	1.4
122101900185	18-19	40	Painted	14-16	89	78	27	21,9	42	32	76	194	2.2
122101900182	18-19	40	Galvanized	14-16	89	78	27	21,9	42	32	76	194	2.2
122102200185	20-22	55	Painted	18-19	101	90	33	24,9	47	38	92	224	3.8
122102200182	20-22	55	Galvanized	18-19	101	90	33	24,9	47	38	92	224	3.8
122102600185	23-26	75	Painted	20-22	114	103	36	28,8	57	44	104	253	5.4
122102600182	23-26	75	Galvanized	20-22	114	103	36	28,8	57	44	104	253	5.4
122103000185	27-30	90	Painted	23-26	127	116	39	32,9	65	51	114	282	7
122103000182	27-30	90	Galvanized	23-26	127	116	39	32,9	65	51	114	282	7
122103600185	31-36	125	Painted	27-28	139	130	43	39,2	71	57	126	312	10
122103600182	31-36	125	Galvanized	27-28	139	130	43	39,2	71	57	126	312	10
122103900185	37-39	150	Painted	30-32	152	155	51	42,5	81	63	136	358	13
122103900182	37-39	150	Galvanized	30-32	152	155	51	42,5	81	63	136	358	13
122104200185	40-42	170	Painted	33-35	165	171	54	45,5	83	70	146	390	17
122104200182	40-42	170	Galvanized	33-35	165	171	54	45,5	83	70	146	390	17

## Closed Spelter Socket CSS

### Technical data

Part code	Rope Ø range mm	MBL ton	Finish	Strand Ø mm	A mm	B mm	C mm	Ø H mm mm	K mm	T mm	TA mm mm	TL mm mm	Weight kg
122104800185	43-48	225	Painted	36-40	190	198	55	52,5	93	76	171	443	26
122104800182	43-48	225	Galvanized	36-40	190	198	55	52,5	93	76	171	443	26
122105400185	49-54	280	Painted	42-45	216	224	62	59,1	100	82	193	502	37
122105400182	49-54	280	Galvanized	42-45	216	224	62	59,1	100	82	193	502	37
122106000185	55-60	360	Painted	46-48	228	247	73	65,1	112	92	216	548	50
122106000182	55-60	360	Galvanized	46-48	228	247	73	65,1	112	92	216	548	50
122106800185	61-68	425	Painted	50-54	248	270	79	73,4	140	102	241	257	66
122106800182	61-68	425	Galvanized	50-54	248	270	79	73,4	140	102	241	257	66
122107500185	69-75	460	Painted	56-62	279	286	79	79,4	159	124	273	644	91
122107500182	69-75	460	Galvanized	56-62	279	286	79	79,4	159	124	273	644	91
122108000185	76-80	560	Painted	64-67	315	298	83	88,2	171	133	292	696	117
122108000182	76-80	560	Galvanized	64-67	315	298	83	88,2	171	133	292	696	117
122108600185	81-86	625	Painted	69-76	330	311	102	92,4	184	146	311	743	125
122108600182	81-86	625	Galvanized	69-76	330	311	102	92,4	184	146	311	743	125
122109300185	87-93	720	Painted	78-86	356	330	102	98,8	197	159	330	788	176
122109300182	87-93	720	Galvanized	78-86	356	330	102	98,8	197	159	330	788	176
122110200185	94-102	875	Painted	88-96	381	356	108	107,8	216	178	362	845	228
122110200182	94-102	875	Galvanized	88-96	381	356	108	107,8	216	178	362	845	228
122111500185	108-115	1,200	Painted	98-110	450	425	125	129,5	235	190	405	1,000	323
122111500182	108-115	1,200	Galvanized	98-110	450	425	125	129,5	235	190	405	1,000	323
122113000185	120-130	1,400	Painted	112-124	500	525	125	147,1	260	200	450	1,150	447
122113000182	120-130	1,400	Galvanized	112-124	500	525	125	147,1	260	200	450	1,150	447
122114000185	135-140	1,600	Painted	125-132	540	495	150	153,9	290	220	520	1,185	645
122114000182	135-140	1,600	Galvanized	125-132	540	495	150	153,9	290	220	520	1,185	645
122115300185	142-153	2,000	Painted	133-143	585	530	170	171,1	305	240	545	1,285	741
122115300182	142-153	2,000	Galvanized	133-143	585	530	170	171,1	305	240	545	1,285	741
122116500185	154-165	2,220	Painted	144-154	630	565	175	185,1	330	250	575	1,370	860
122116500182	154-165	2,220	Galvanized	144-154	630	565	175	185,1	330	250	575	1,370	860
122117800185	166-178	2,500	Painted	155-166	680	590	180	199,1	330	270	595	1,450	985
122117800182	166-178	2,500	Galvanized	155-166	680	590	180	199,1	330	270	595	1,450	985
122119100185	180-191	2,800	Painted	167-179	725	620	190	213	350	290	625	1,535	1,183

## Closed Spelter Socket CSS

### Technical data

Part code	Rope Ø range mm	MBL ton	Finish	Strand Ø mm	A mm	B mm	C mm	Ø H mm mm	K mm	T mm	TA mm mm	TL mm mm	Weight kg
122119100182	180-191	2,800	Galvanized	167-179	725	620	190	213	350	290	625	1,535	1,183
122120400185	192-204	3,200	Painted	180-191	775	650	210	228,5	395	305	690	1,635	1,487
122120400182	192-204	3,200	Galvanized	180-191	775	650	210	228,5	395	305	690	1,635	1,487